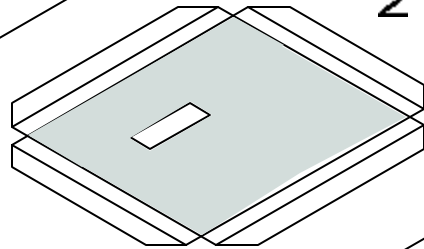
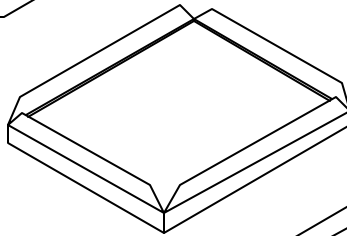


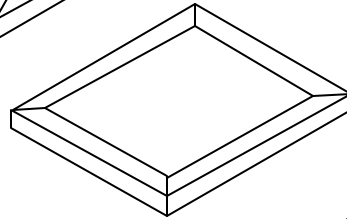
1 Score fold lines. Punch holes through corners into foam board. Connect these holes with pencil lines to outline the matching board. Cut out the board.



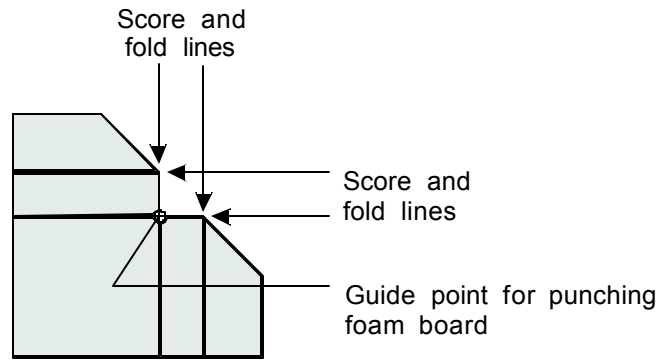
2 Cut out the cover including any tape access holes.



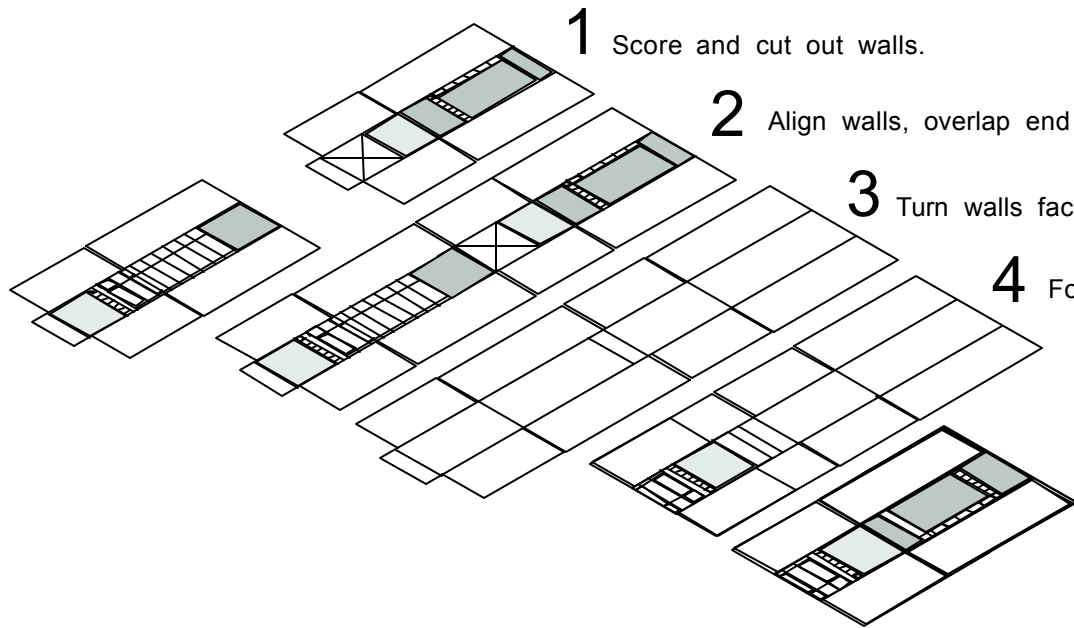
3 Turn the cover face down and fold edge flaps up. Place foam board on bottom of cover and fold flaps around sides of foam and then down flat on the foam surface. Tape flaps securely to foam board.



4 Turn cover face up. Tape cover to foam board around access holes.



Typical Cover Corner



1 Score and cut out walls.

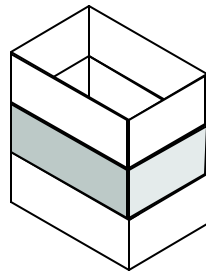
2 Align walls, overlap end tab, join using double stick tape on tab.

3 Turn walls face down and tape tab.

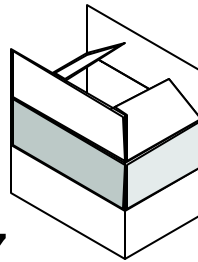
4 Fold end wall up, over, and flat.

5 Fold opposite end up, over, and flat overlapping tab. Fasten using double stick tape on tab.

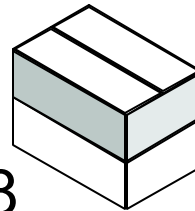
Open walls and tape the inside flap. **6**



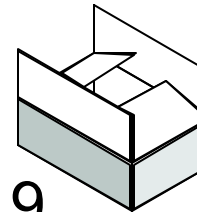
Fold the bottom flaps with short flaps on the inside. **7**



Align flaps and tape outside and inside. **8**



Fold and tape top flaps. **9**



Finished MiniBox. **10**

